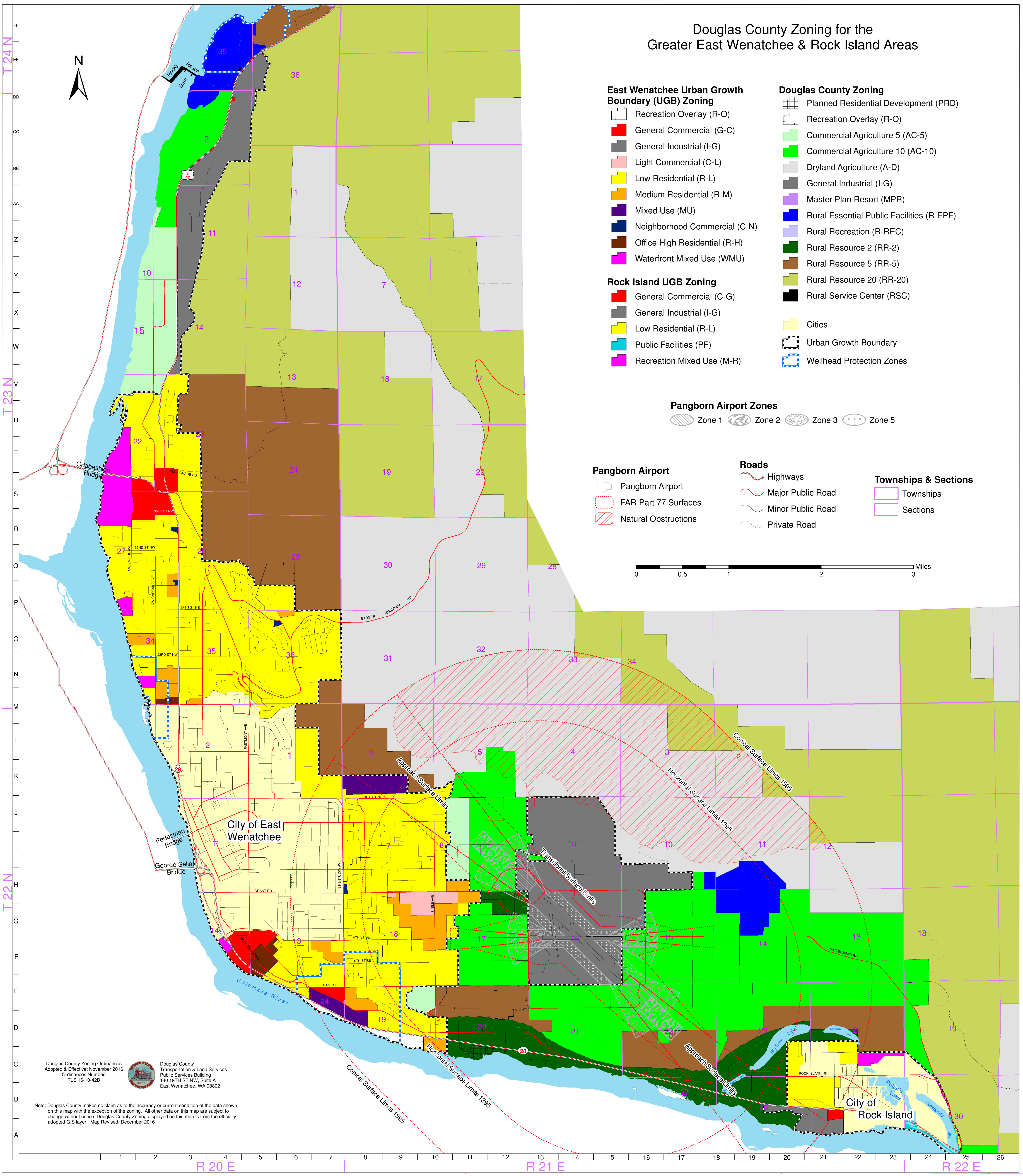


# Douglas County Zoning for the Greater East Wenatchee & Rock Island Areas



## East Wenatchee Urban Growth Boundary (UGB) Zoning

- Recreation Overlay (R-O)
- General Commercial (G-C)
- General Industrial (I-G)
- Light Commercial (C-L)
- Low Residential (R-L)
- Medium Residential (R-M)
- Mixed Use (MU)
- Neighborhood Commercial (C-N)
- Office High Residential (R-H)
- Waterfront Mixed Use (WMU)

## Rock Island UGB Zoning

- General Commercial (C-G)
- General Industrial (I-G)
- Low Residential (R-L)
- Public Facilities (PF)
- Recreation Mixed Use (M-R)

## Douglas County Zoning

- Planned Residential Development (PRD)
- Recreation Overlay (R-O)
- Commercial Agriculture 5 (AC-5)
- Commercial Agriculture 10 (AC-10)
- Dryland Agriculture (A-D)
- General Industrial (I-G)
- Master Plan Resort (MPR)
- Rural Essential Public Facilities (R-EPF)
- Rural Recreation (R-REC)
- Rural Resource 2 (RR-2)
- Rural Resource 5 (RR-5)
- Rural Resource 20 (RR-20)
- Rural Service Center (RSC)
- Cities
- Urban Growth Boundary
- Wellhead Protection Zones

## Pangborn Airport Zones

- Zone 1
- Zone 2
- Zone 3
- Zone 5

## Pangborn Airport

- Pangborn Airport
- FAR Part 77 Surfaces
- Natural Obstructions

## Roads

- Highways
- Major Public Road
- Minor Public Road
- Private Road

## Townships & Sections

- Townships
- Sections



Douglas County Zoning Ordinances  
 Adopted & Effective: November 2016  
 Ordinance Number:  
 TLS 16-10-42B

Douglas County  
 Transportation & Land Services  
 Public Services Building  
 140 19TH ST NW, Suite A  
 East Wenatchee, WA 98802

Note: Douglas County makes no claim as to the accuracy or current condition of the data shown on this map with the exception of the zoning. All other data on this map are subject to change without notice. Douglas County Zoning displayed on this map is from the officially adopted GIS layer. Map Revised: December 2016